



AffluenceTM
Global
Live Your Dream

BUSINESS OPPORTUNITY OVERVIEW

**Live
Your
Dream**
with Affluence Global



...

COMPANY INTRODUCTION

PERSONALITY & COMMITMENT

What We Are:

- ❖ Direct Selling & eCommerce Company.
- ❖ Providing full-time and part-time earning opportunities to our members (independent distributors and affiliates)
- ❖ Connecting members with the right products and markets in real-time.

Our Commitment:

- ❖ We are dedicated to designing and manufacturing products that positively impact your life.
- ❖ We are committed to delivering optimum health to your doorstep through social marketing and direct selling.
- ❖ We are committed to giving you cutting-edge nutritional supplements.
- ❖ We pledge to help you attain optimum wealth through our flexible earning opportunity.
- ❖ At **AFFLUENCE GLOBAL**, we believe in giving 110%. We are also committed to supporting and caring for the young and marginalized.

APPROACH & PILLARS

Our Business Approach

- ❖ Our business is simple; it is done through social selling and sharing.
- ❖ We provide you with a state-of-the-art online shop (e-commerce / e-malls) loaded with the finest products using cutting-edge technology.
- ❖ We want our independent distributors and affiliates to succeed, so we have various ways for you to earn.

3 Pillars of Our Ecosystem:

- ❖ To build long-term business sustainability, our ecosystem is built on three pillars:
 1. Innovation,
 2. Product efficacy, and
 3. Trusted relationships.
 - We promise that our sacrifice to assurance and reliability will help develop and ensure loyalty between our affiliates and customers.
- ● ●
 - We are creating an “Ecosystem of Trust” that would allow a great deal of frictionless buyer-seller experience for team success.

VISION & MISSION

OUR VISION

- ✓ To become the largest provider of health and wealth opportunities in this vibrant and growing direct-selling industry.
- ✓ To offer only scientifically tested beauty and health products.
- ✓ To offer a flexible earning opportunity to all, irrespective of age, culture, gender, or ability.
- ✓ We aim to be the best we can be in helping you ***“Live Your Dream.”***



OUR MISSION

- ✓ To protect, serve, and promote the effectiveness of independent distributors, affiliates, and representatives.
- ✓ To support every stakeholder in achieving our collective goals of health and wealth.
- ✓ To ensure that the direct sales opportunity is conducted with the highest level of business ethics and service quality to consumers.
- ✓ We believe in and promote excellence in our service delivery.

OUR VALUES



Service Excellence

- ✓ Provide value for customers.
- ✓ Contribute to our community.

Knowledge

- ✓ Be technical experts & problem solvers.
- ✓ Train, develop & invest in people.

Integrity

- ✓ Deliver on our promises.
- ✓ Be honest.
- ✓ Be fair & transparent.
- ✓ Be responsible & accountable.

Leadership

- ✓ Encourage collaboration & teamwork.
- ✓ Set direction & take action.

Legacy

- ✓ Acknowledge our history.
- ✓ Strengthen our future.

Harmony & Social Network

- ✓ Maintain harmony.
- ✓ Avoid confrontation.
- ✓ Let relationships prevail over profit.
- ✓ Develop interdependent relationships.

Health

- ✓ Cultivate a holistic view of wellness.
- ✓ Invigorate a healthy body.
- ✓ Support a strong mind.

LEADERSHIP



GOVERNANCE & LEADERSHIP

Company Leaders

- ✓ Our Company is led by a team of professionals best known for developing leaders and creating full-time income on a part-time basis in record time.
- ✓ Affluence Global embodies a professional, highly skilled, and experienced team with over 35 years of combined industry experience.
- ✓ This multinational team has executed projects of various sizes.
- ✓ With some of the industry's most intelligent minds on our team, giving us the depth and enviable 'on the ground' experience, we always come up on top of our game.

Our BOARD of Directors are from the following fields:

- • •
 - ✓ Pharmaceuticals & Public Health
 - ✓ Law & Development
 - ✓ IT and Innovations
 - ✓ Governance & Leadership
 - ✓ Finance & Wealth Management
 - ✓ Taxation and Accounting
 - ✓ Business Consulting
 - ✓ Digital Marketing
 - ✓ Direct-Selling

Meet Our Global Executives



Dr. Abena Nyarkoa Asomaning (PhD)
Board Chair



Prof. Emmanuel Asamoah
Ag. CEO & CD



Prince K. Simpri

Co-Founder
Chief Innovations Officer
CIO



David Awia Kubaferi

Co-Founder
Chief Operations Officer
COO



Josephine A. S. Mawunyo

Executive Director
Chief Finance Officer
CFO

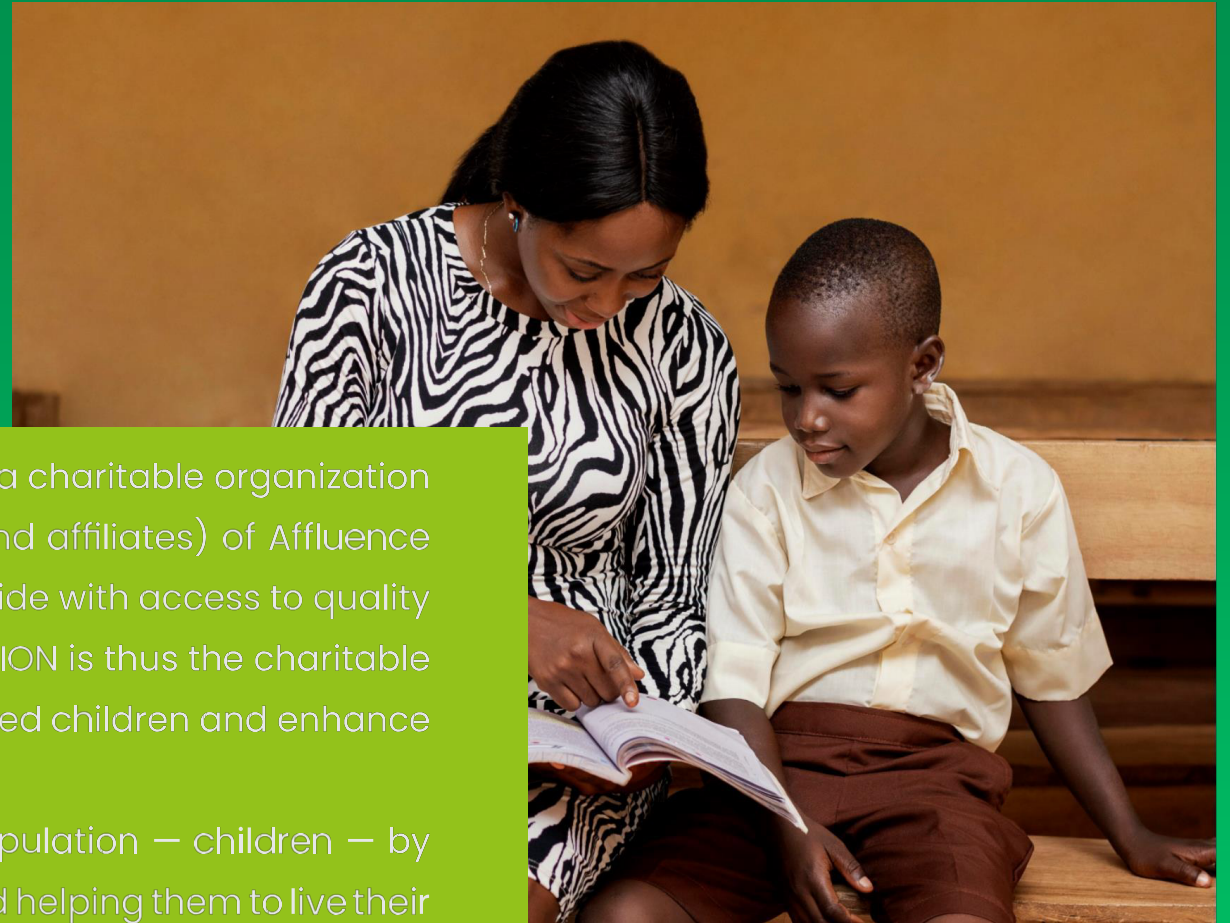
Dr. Abena Nyarkoa Asomaning (PhD)	Prof. Emmanuel Asamoah (PhD)	Josephine A. S. Mawunyo (C.A, CITG)	David Awia Kubaferi (Co-Founder)	Prince Kojo (Co-Founder)
Board Chair	Ag. CEO & CD	Chief Finance Officer (CFO)	Chief Operating Officer (COO)	Chief Innovation Officer (CIO)
<p>Skills & Competencies</p> <ul style="list-style-type: none"> ✓ PhD in Health Economics from France ✓ MBA from University of Lincoln (UK) ✓ Awarded by the Queen of England ✓ Recognized by President Macron of France ✓ Consultant for the Ministry of Health ✓ Ministry of Environment, Science & Technology, ✓ Ernst & Young Ghana ✓ Stakeholder management, ✓ Government relations, ✓ Community development, ✓ Project management, ✓ Environmental and social risk management, ✓ Monitoring & evaluation, ✓ Policy analysis, ✓ Management advisory, ✓ Business development, ✓ Customer service auditing, ✓ Strategic direction, ✓ Counseling. 	<p>Skills & Competencies</p> <ul style="list-style-type: none"> ✓ A proud recipient of the 2020 Czech National Agency for International Education and Research (DZS) Awards ✓ PhD in Economics and Management from Czech Republic ✓ MSc in Management and Economics from Czech Republic ✓ LLB from GIMPA ✓ LLM in Alternative Dispute Resolution (ADR) ✓ Barrister and Solicitor of the Supreme Court of Ghana ✓ Law & development, ✓ Marketing, ✓ International business, ✓ Insurance, ✓ Project management, ✓ Logistics management, ✓ Information technology & communication ✓ Competitiveness of firms ✓ Performance management 	<p>Skills & Competencies</p> <ul style="list-style-type: none"> ✓ Accomplished Finance and tax professional ✓ MBA in Finance ✓ Chartered Accountant (ICAG) ✓ Chartered Tax Practitioner (CITG) ✓ Tax Planning & administration, ✓ Financial analysis, ✓ International business, ✓ Oil & Gas business, ✓ Financial performance, ✓ Risk management ✓ Financial planning ✓ Best Graduating Female Student CITG, 2020; ✓ Best Graduating Student in Corporate Governance awarded by UPSA, 2019; ✓ Overall Best Student in Business and Corporate Law awarded by ICAG, 2015 	<p>Skills & Competencies</p> <ul style="list-style-type: none"> ✓ A professional visionary with the utmost integrity, David has grown a vast customer base for nutritional supplements beyond expectations in the past nine years. ✓ His perseverance and dedication has led to the continued expansion of his previous businesses, second to none. ✓ Founder and CEO of MOREFAVOUR HC Ltd. ✓ Rose to the SUPERLIFE Worldwide Hall of Fame. ✓ Facilitated operations of the Company in more than 10 countries across the globe. ✓ Over 12 years experience leading a highly motivated team his previous direct-selling companies. ✓ Skilled in Coaching, Financial planning, Wealth management, etc. 	<p>Skills & Competencies</p> <ul style="list-style-type: none"> ✓ A proven leader in marketing and sales performance in health and wellness ✓ Developed leading sales teams in more than 10 countries selling companies and achieved significant milestones and landmarks across the globe ✓ Driven multiple successful businesses in more than 10 countries across the globe ✓ Over 15 years experience creating successful projects and ground floor sales. ✓ Skilled in International Brands Management, Health/Wellness Business Personal Branding, International Strategy, Management, and

About

Affluence Global Foundation

Founded in 2022, **AFFLUENCE GLOBAL FOUNDATION** is a charitable organization sponsored by members (independent distributors and affiliates) of Affluence Global Ltd to support underprivileged children worldwide with access to quality healthcare and education. Affluence Global FOUNDATION is thus the charitable arm of Affluence Global Ltd to reach out to marginalized children and enhance the lives of those most in need.

We are dedicated to serving our most vulnerable population — children — by giving them the resources they need to live happily and helping them to live their dreams. At Affluence Global FOUNDATION, we connect people across the globe with projects that provide kids with quality healthcare and educational materials worldwide.



Helping Children Achieve Their Dreams

LOGO ELEMENTS



KEYWORD: Children | Health | Wellness | Help | Support | Care

8246



HELPING
CHILDREN
ACHIEVE THEIR
DREAMS.



GIVING BACK

Together, we're making a difference in the world! Every AffluenceGlobal product purchase you make generates a life-saving donation to a child through the AffluenceGlobal FOUNDATION.

Next year, we are aiming to help over 10,000 children, and we cannot do it without the support of our great partners like you. Thanks for helping us make a real difference!



OUR WELLNESS PRODUCTS



DOUBLE RED ROSE



- Anti-depressant
- Anti-spasmodic
- Antiseptic
- Aphrodisiac
- Astringent
- Increase Bile Production
- Innate Cleanser
- Anti-Aging
- Anti-Bacterial

BUY NOW!

www.affluenceglobaldream.com

 [affluenceglobal](https://www.affluenceglobal.com)



Double Red Rose

10ml * 15 sachets

Active Ingredients:

- ❖ Red Rose
- ❖ Goji Berry
- ❖ Pomegranate
- ❖ Peach
- ❖ Chinese Dates (Jujube)
- ❖ Red Grapes
- ❖ Acerola Cherry
- ❖ Lemon
- ❖ Red Ginseng
- ❖ Carob Extract
- ❖ Honey Locust
- ❖ Honey
- ❖ NAC (N-Acetyl Cysteine)
- ❖ Roselle

WHY SHOULD YOU USE DOUBLE RED ROSE?

Double Red Rose combines a well-formulated blend of red super fruits traditionally used as:

- Anti-depressant:** Used to treat major depressive disorders, anxiety disorders, chronic pain, and addiction.
- Anti-spasmodic:** Used to relieve cramps of involuntary muscle.
- Aphrodisiac:** Increase sexual performance, desire and pleasure.
- Astringent:** Used to remove excess oil from the skin, contraction of body tissues, checks blood flow, remove leftover makeup, and relieve skin irritations resulting from minor cuts, allergies, eczema, stretch marks and insect bites.
- Anti-Bacterial:** Prevents the growth and spread of bacteria.
- Antiseptic:** Prevent the growth of disease-causing microorganisms.
- Increase Bile Production:** helps break down and digest the fats present in food.
- Anti-Aging:** slowing, preventing, or reversing the aging process in human body
- Detoxification:** Removal of toxic substances from the body

Double Red Rose is a red superfood gel packed with antioxidants to help clean up unstable free radicals that damage cells. It is rich in resveratrol, zeaxanthin, polyphenols, quercetin, carotenes, and phytonutrient antioxidants.

- 1. Antioxidant Properties:** Many of these ingredients, including Goji berry, Acerola cherry, Pomegranate, and Grape, are rich in antioxidants. Antioxidants help protect cells from damage caused by free radicals, reducing the risk of chronic diseases and promoting overall health.
- 2. Immune Support:** Red ginseng and Acerola cherry are known for their immune-boosting properties, providing essential vitamins and minerals to support the immune system.
- 3. Skin Health:** The antioxidants in Double Red Rose and Pomegranate can help improve skin health by reducing signs of aging and promoting a healthy complexion.
- 4. Cognitive Health:** Ginseng extract is believed to enhance cognitive function and help with memory and concentration.
- 5. Digestive Health:** Carob extract and honey can support digestive health. Honey, in particular, has antibacterial properties and can soothe the digestive tract.
- 6. Energy and Vitality:** Ingredients like Red ginseng, Jujube, and Locust honey contribute to increased energy levels and overall vitality.
- 7. Cardiovascular Health:** Some of these ingredients, such as Goji berry and Pomegranate, are associated with improved heart health, including lower blood pressure and reduced risk of heart disease.
- 8. Weight Management:** Some of these ingredients are low in calories and high in fiber, making them potentially beneficial for weight management when part of a balanced diet.
- 9. Improved Mood:** Certain ingredients, like Ginseng extract, have mood-boosting effects and help alleviate stress and anxiety.
- 10. Blood Sugar Control:** Some ingredients, like Jujube and Carob extract, help regulate blood sugar levels, which is essential for individuals with diabetes.
- 11. General Well-being:** The combination of these ingredients can contribute to an overall sense of well-being, providing a variety of essential vitamins, minerals, and nutrients.
- 12. Hydration:** Lemon, Honey, Peach, and various fruits in the blend can help keep you hydrated. These ingredients can

Double Red Rose *Helps with;*

- ❖ Kidney
- ❖ Osteoporosis
- ❖ Tuberculosis (TB)
- ❖ Sexual dysfunction
- ❖ Menstrual pain
- ❖ Parkinson's disease
- ❖ Infertility
- ❖ Prostate
- ❖ Low libido
- ❖ Fibroid
- ❖ Epilepsy
- ❖ Stroke

- ❖ Cancer
- ❖ Burns
- ❖ Urinary tract infection (UTI)
- ❖ Acne
- ❖ Cholesterol
- ❖ Allergies
- ❖ Hypertension (BP)
- ❖ Cardiovascular
- ❖ Bones and joints
- ❖ Bladder problems
- ❖ Candidiasis (yeast infection)
- ❖ Detoxification
- ❖ Diarrhea
- ❖ Inflammation
- ❖ Asthma
- ❖ Nervous disorder
- ❖ Diabetes
- ❖ Ulcer
- ❖ Hepatitis B
- ❖ Pneumonia due to constipation
- ❖ Migraine
- ❖ Insomnia
- ❖ Menopause
- ❖ Jaundice
- ❖ Tumor
- ❖ Anti-aging
- ❖ Eye disorders
- ❖ Skin
- ❖ Immune boosting
- ❖ Headaches
- ❖ Low sperm count
- ❖ Arthritis
- ❖ Weight loss
- ❖ Breast disorders
- ❖ Eczema (Dermatitis)
- ❖ Loss of appetite
- ❖ Memory loss
- ❖ Eye problem

PRODUCT CERTIFICATION



2024

CERTIFICATE OF REGISTRATION

This certifies that:

Affluenceglobalusa LLC
775 Pulaski Hwy
Bear, DE 19701
United States

is registered with the U.S. Food and Drug Administration pursuant to the Federal Food Drug and Cosmetic Act, as amended by the Bioterrorism Act of 2002 and the FDA Food Safety Modernization Act, such registration having been verified as currently effective on the date hereof by Registrar Corp:

U.S. FDA Registration No.: **17457147288**
U.S. FDA UFI (DUNS) No.: **119383187**
U.S. Registration Agent: **Registrar Corp**
144 Research Drive, Hampton, Virginia, 23666, USA
Telephone: +1-757-224-0177 • Fax: +1-757-224-0179

This certificate affirms that the above stated facility is registered with the U.S. Food and Drug Administration pursuant to the Federal Food Drug and Cosmetic Act, as amended by the Bioterrorism Act of 2002 and the FDA Food Safety Modernization Act, such registration having been verified as effective by Registrar Corp as of the date hereof, and Registrar Corp will confirm that such registration remains effective upon request and presentation of this certificate until December 31, 2024, unless such registration has been terminated after issuance of this certificate. Registrar Corp makes no other representations or warranties, nor does this certificate make any representations or warranties to any person or entity other than the named certificate holder, for whose sole benefit it is issued. Registrar Corp assumes no liability to any person or entity in connection with the foregoing. The U.S. Food and Drug Administration does not issue a certificate of registration, nor does the U.S. Food and Drug Administration recognize a certificate of registration. Registrar Corp is not affiliated with the U.S. Food and Drug Administration.

**Registrar Corp**
144 Research Drive, Hampton, Virginia, 23666, USA
Telephone: +1-757-224-0177 • Fax: +1-757-224-0179
info@registrarcorp.com • www.registrarcorp.com


David Lemnarz
Executive Director
Registrar Corp
Dated: October 29, 2024
© Copyright 2003-2023 Registrar Corp



FDA FOOD AND DRUGS AUTHORITY
Your Well-being, Our Priority.

Certificate No: FDA-GH-55251042

CERTIFICATE OF REGISTRATION

of a

FOOD SUPPLEMENT

This is to certify that

DOUBLE RED ROSE LIQUID

is registered for use in Ghana and is subject to the provisions of the Public Health Act, 2012, Act 851

Active Ingredient (s) Strength: Peach, Grape, Acerola Cherry, Jujube, Goji Berry, Lemon, Red Ginseng, Pomegranate

Applicant: AFFLUENCE GLOBAL LTD 5 BISSAU AVENUE EAST LEGON ACCRA
WEIHAI CITY, SHANDONG PROVINCE, NO. 552, CHENGDA ROAD, CHINA

Manufacturer: AFFLUENCE GLOBAL LTD 5 BISSAU AVENUE EAST LEGON ACCRA

Local Agent:

Registration No: FDA/FS.243-02016

Date of Registration: 12-02-2024

The validity of this certificate shall continue until 01-03-2027
Unless otherwise suspended, revoked or varied as to the period of validity.

Dated this 12TH of FEBRUARY 2024


DR. DELESE A. A. DARKO
CHIEF EXECUTIVE OFFICER

002403174

Terms & Conditions Apply.







AffluenceTM
Global
Live Your Dream

COMPENSATION PLAN – GH¢



Membership Package

MEMBERSHIP PACKAGE

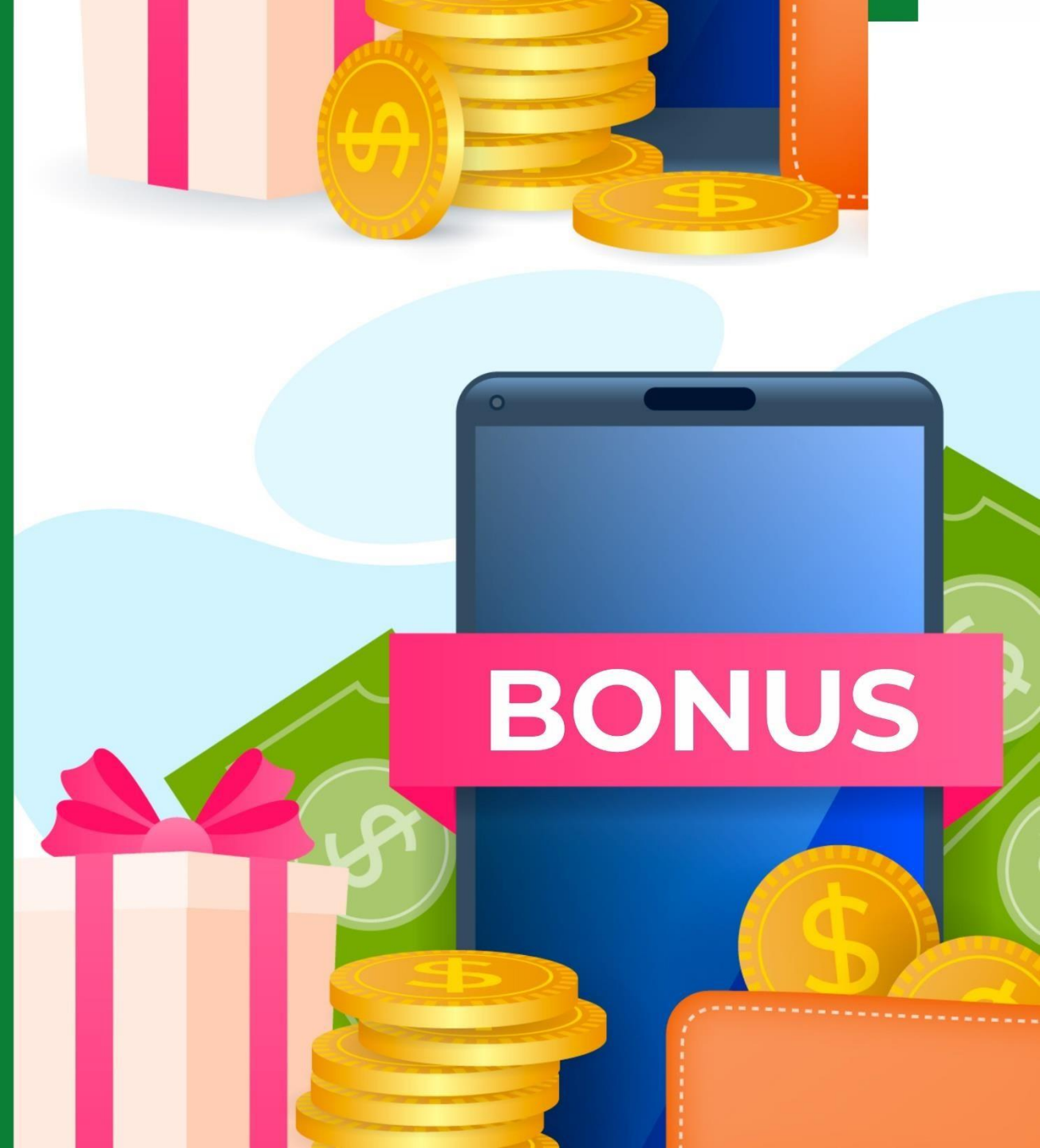
		PRICE (GH¢)	BV	PRODUCT
	Associate	468	30	1
	Promoter	1,365	90	3
	Business Builder	6,175	350	15
	Business Owner	12,350	700	30



10 WAYS OF EARNING

1

Retail
Bonus



Quantity

BV

Wholesale (GH¢)

Retail Price (GH¢)

Profit (GH¢)

1

10

390

455

65

2

20

748

910

163

4

40

1,435

1,820

385

6

60

2,059

2,730

671

8

80

2,620

3,640

1,020

10

100

3,120

4,550

1,430

2

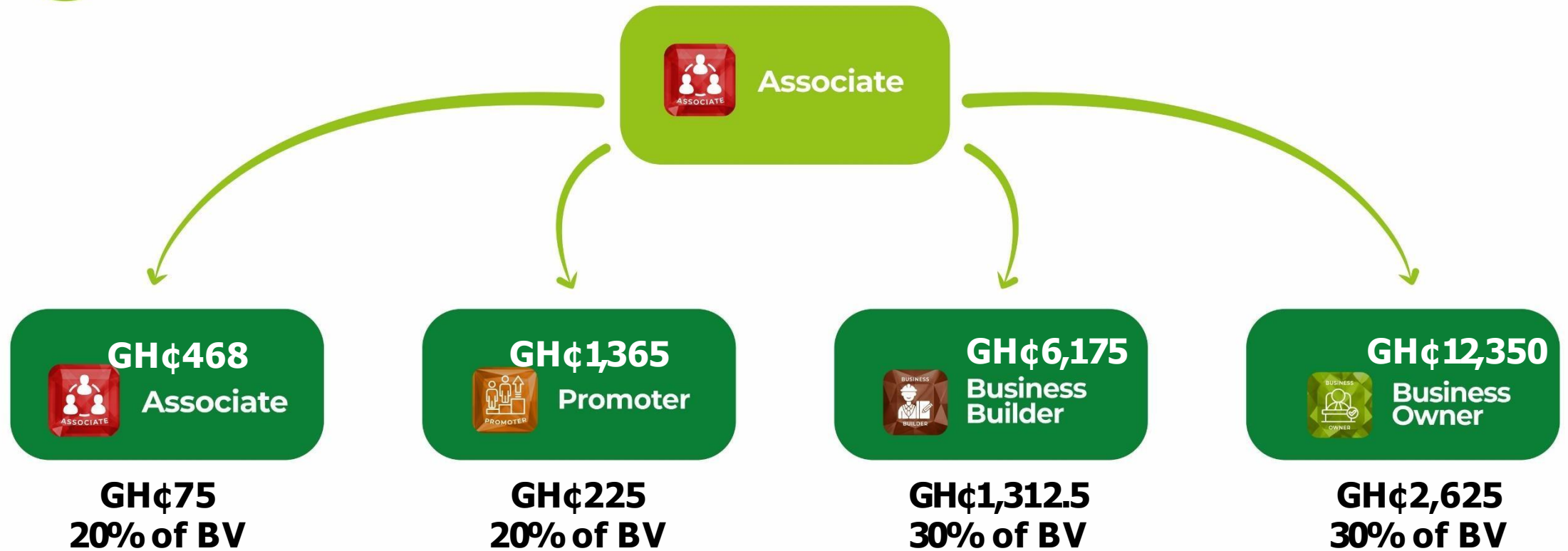
Referral Bonus

This is a direct bonus earn on referrals



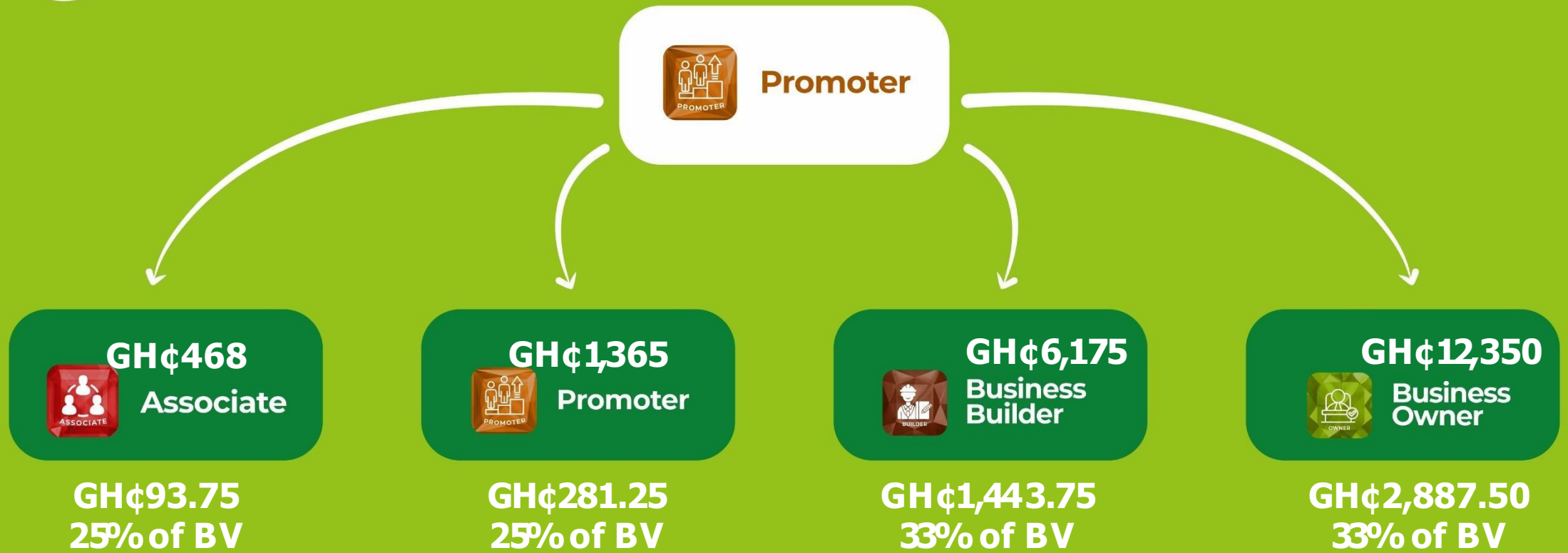
2

Referral Bonus



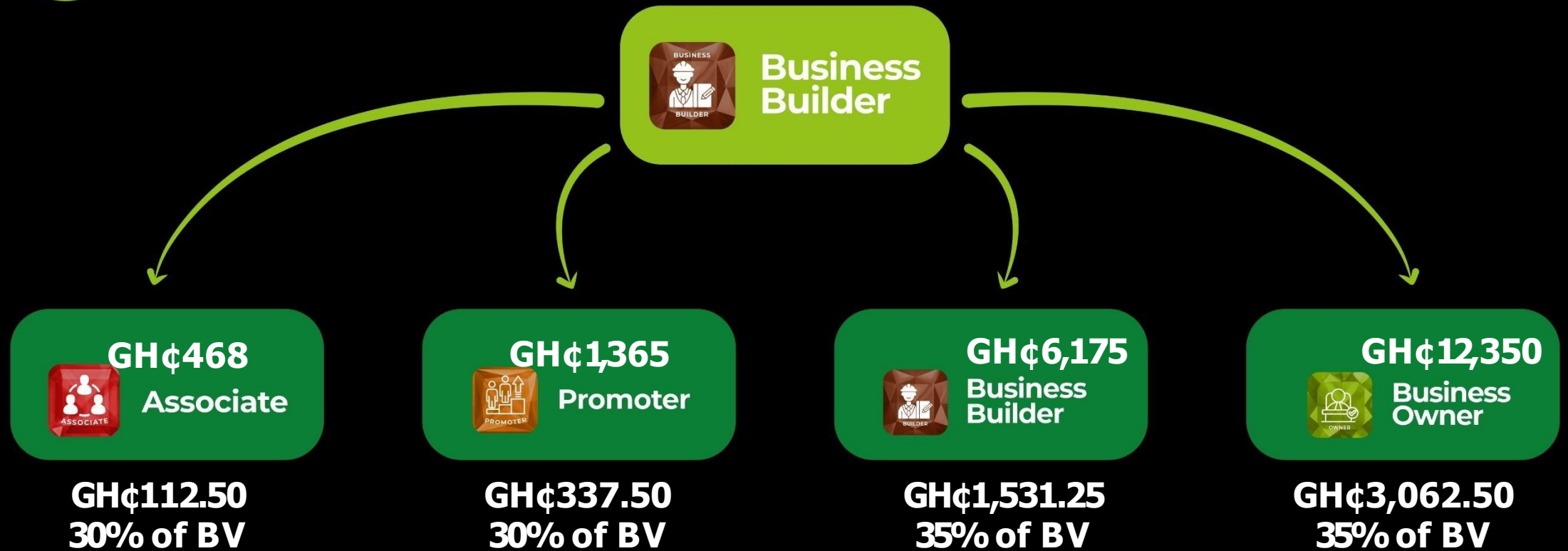
2

Referral Bonus



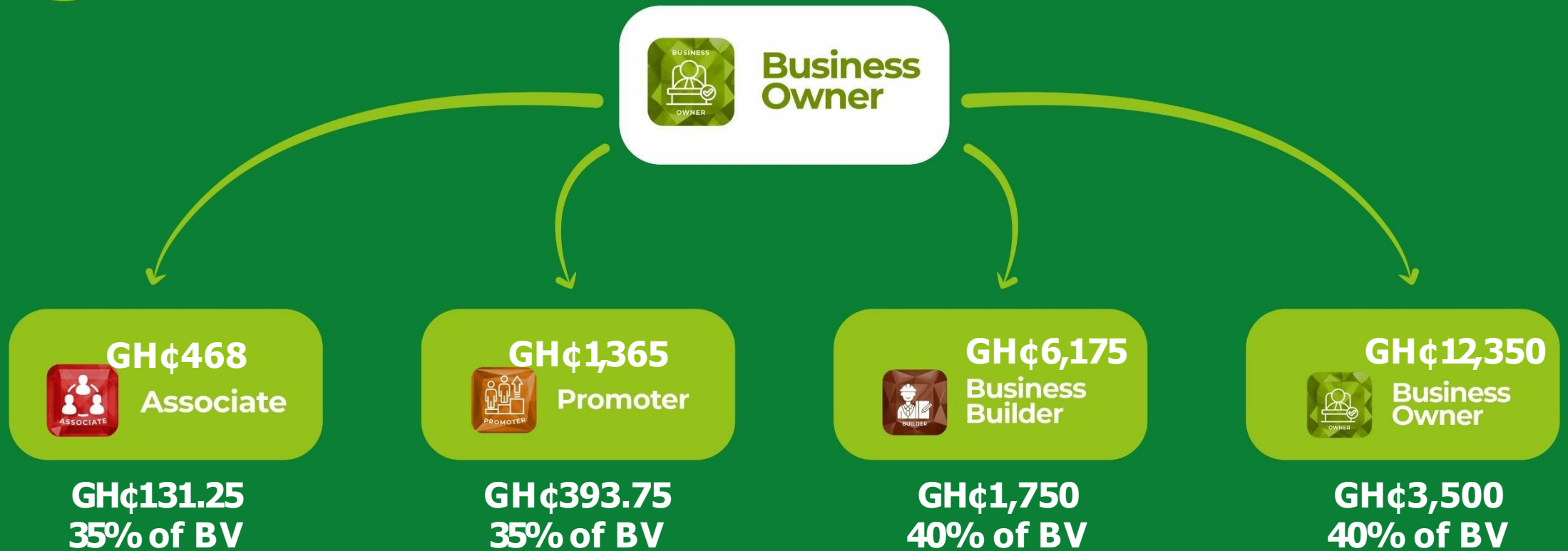
2

Referral Bonus



2

Referral Bonus





3

Upgrade Point/Bonus

3

Upgrade Point/Bonus



The maximum payout for each package in Affluence Global:



Associate

**GH¢
131.25**



Promoter

**GH¢
393.75**



Business
Builder

**GH¢
1,750**



Business
Owner

**GH¢
3,500**

For Example: If an Associate refers a Business Owner, he/she earns a direct **Referral Bonus of GH¢2,625** but the actual amount the company releases for payout is **GH¢3,500**; therefore, the difference $GH¢3,500 - GH¢2,625 = GH¢875$ will be credited to an Upgrade Wallet until it hit the desired amount for an affiliate to upgrade his/her status.

An Upgrade Bonus is paid out whenever a downline upgrades his/her account.

4

Team Commission



4

Team Commission

Team Commission is the heart of Affluence Compensation plan. An Affiliate earns a % of all the team volumes generated on the lesser leg. The % earn depends on the Affiliate membership package.



Associate = 5%



Promoter = 7%



Business Builder = 10%



Business Owner = 12%



Business Owner

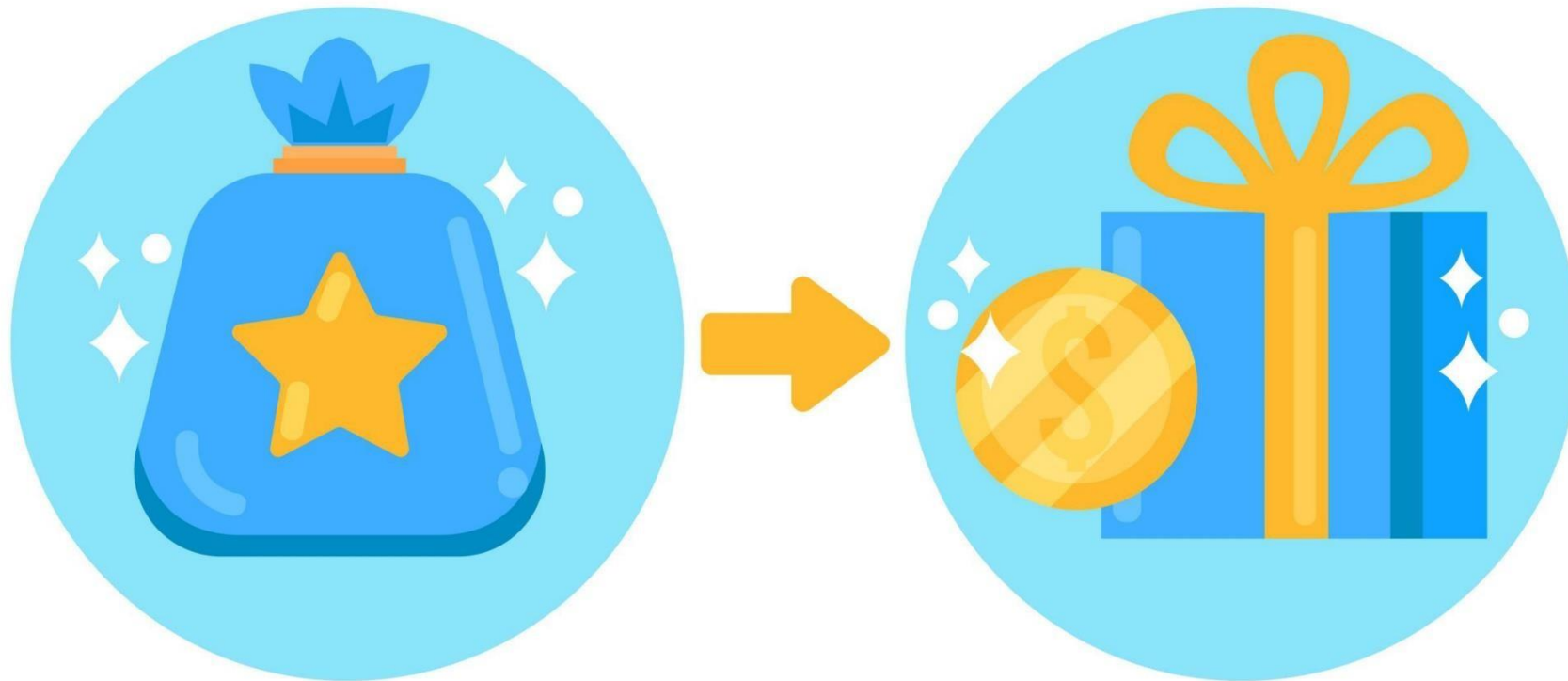
10,000

6,000

For Example: $\frac{12}{100} \times 6,000 = \$720 \times \text{¢}12.5 = \text{GH¢}9,000$

5

Momentum Bonus



5

Momentum Bonus

A percentage is paid on the Binary Commission earned



Associate

5%



Promoter

7%



Business Builder

10%



Business Owner

13%

For Example:

**If a Business Owner earned \$10,000
13% will be paid on the \$10,000 as Momentum Bonus.**

$$\frac{13}{100} \times \$10,000 = \mathbf{\$1,300} \times \text{¢}12.5 = \text{GH¢}16,250$$

6

Check-Match Upline Bonus



6

Check-Match Upline Bonus

When an affiliate hits the following ranks, he/she earns a percentage on the binary earnings of his immediate/direct upline.

Ranks

Percentage (%)



Ruby

2%



Emerald

3%



Diamond

5%

7

Global Pool Bonus

10% of the Company Global profit will be shared among 10 pools.
Example, if the company makes a profit of GH¢12.5 Million,

$$\frac{10}{100} \times \text{GH¢}12.5\text{m} = \text{GH¢}1,250,000$$

$$\frac{\text{GH¢}1,250,000}{10}$$

$$= \text{GH¢}125,000$$

Each Pool will share
GH¢125,000



Ranks

Global Pool Bonus

GH¢



Ruby

125,000



Emerald

125,000



Diamond

125,000



**Blue
Diamond**

125,000



**Black
Diamond**

125,000



**Team
Elite**

125,000



**Royal Team
Elite**

125,000



**Presidential
Team Elite**

125,000



**Imperial Team
Elite**

125,000



**Crown
Elite**

125,000

8

Personal Purchase Bonus



Affluence Global will pay back 10% on the volume of all personal purchases made by an affiliate in the Unilevel



Example, If an affiliate made a personal purchase of product worth GH¢13,000 and this purchase generates a personal volume of 500BV

$$\frac{10}{100} \times 500 = \text{GH¢}625$$



9

Compressed Unilevel Bonus

This a generational bonus.



LEVELS

UNILEVEL (%)

1

9

2

7

3

5

4

5

5

5

6

2

7

1

8

1

9

1

10

1

MONTHLY UNILEVEL BONUS ILLUSTRATION

PRODUCT PRICE: \$30

PRODUCT BV: 10

SPONSOR LEVEL	NO. OF DOWNLINES	TOTAL BV	PERCENTAGE (%)	INCOME PER LEVEL(\$)
1	10	100	9	\$9
2	100	1,000	7	\$70
3	1,000	10,000	5	\$500
4	10,000	100,000	5	\$5,000
5	100,000	1,000,000	5	\$50,000
6	1,000,000	10,000,000	2	\$200,000
7	10,000,000	100,000,000	1	\$1,000,000
8	100,000,000	1,000,000,000	1	\$10,000,000
9	1,000,000,000	10,000,000,000	1	\$100,000,000
10	10,000,000,000	100,000,000,000	1	\$1,000,000,000

10

Unilevel Check-Match Commission



LEVELS

1	2	3	4	5
15	10	5	5	3

CHECK-MATCH (%)

ADDDITIONAL BENEFITS

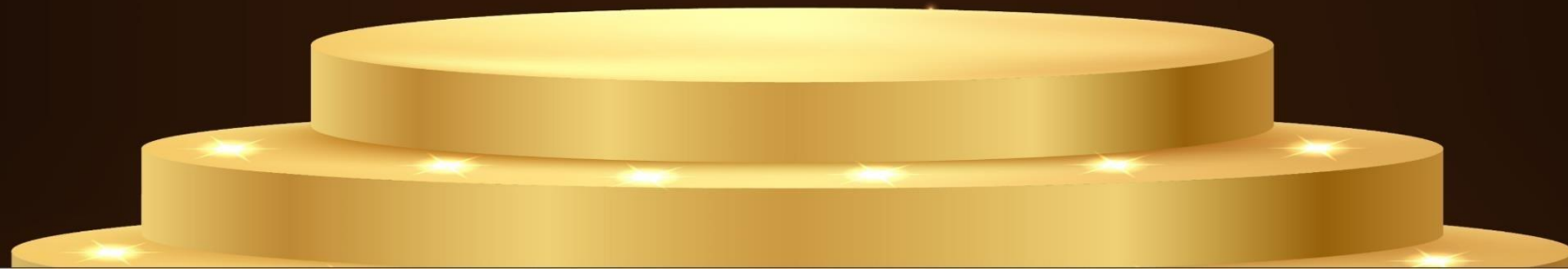
Incentives

Hall of Fame

RANKS IN AFFLUENCE GLOBAL

	RANKS	CUMULATIVE AMOUNT (USD)	INCENTIVES
 Pearl	Pearl	3,000	 Rice Cooker
 Jade	Jade	5,000	 Microwave
 Sapphire	Sapphire	10,000	 Utensils/ Iron & Blender
 Ruby	Ruby	25,000	 Projector
 Emerald	Emerald	50,000	 Laptop i7
 Diamond	Diamond	100,000	 Fridge / iPad Air Pro
 Blue Diamond	Blue Diamond	150,000	 Freezer / Mac Book Pro
 Black Diamond	Black Diamond	250,000	 Washing Machine / 75 inch UHD 4K QLED TV
 Team Elite	Team Elite	500,000	 Landcruiser V8 / Lexus 570 / Range Rover G-Wagon
 Royal Team Elite	Royal Team Elite	700,000	 2 Bedroom
 Presidential Team Elite	Presidential Team Elite	1,000,000	 3 Bedroom Apartment
 Imperial Team Elite	Imperial Team Elite	2,000,000	 4 Bedroom Apartment
 Crown Elite	Crown Elite	3,000,000	

HALL OF FAME



Affluence Global Hall of Fame

OPTION 1

Earn Cumulative Personal volume of 500,000 BV in the Unilevel;



Affluence Global Loyalty Card

GH¢37,500 will be loaded on this card every month for a period of 1year.



All Global events sponsored by the company (Trips and Accommodation)



A brand new executive car worth GH¢375,000

OPTION 2

Earn USD 1Million Cumulative Commission



Affluence Global Loyalty Card

GH¢37,500 will be loaded on this card every month for a period of 1year.



All Global events sponsored by the company (Trips and Accommodation)

AG

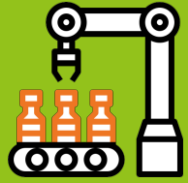
PROSPERITY PLAN



Build the **life** of your dreams



Invest in a company you can depend on ...



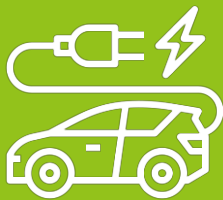
Factory

- Establish Custom-Bonded Warehouses to Serve each Subregion of Africa (North, South, East & West)
- Partner with Canada & China to Set-Up a Factory in the heart of Africa



Real Estate

- To construct a high-quality but affordable customer-focused housing unit
- Rank Incentives and Awards



Electric Vehicles

- Partner with one of the fastest growing EV Companies in the world
- Rank Incentives and Awards

GET READY TO REACH
YOUR FULL POTENTIAL
WITH



...
AffluenceTM
Global
Live Your Dream



Thank
You!

AFRICA
THIS
IS YOUR
TIME!

Live Your Dream
with **Affluence Global**

